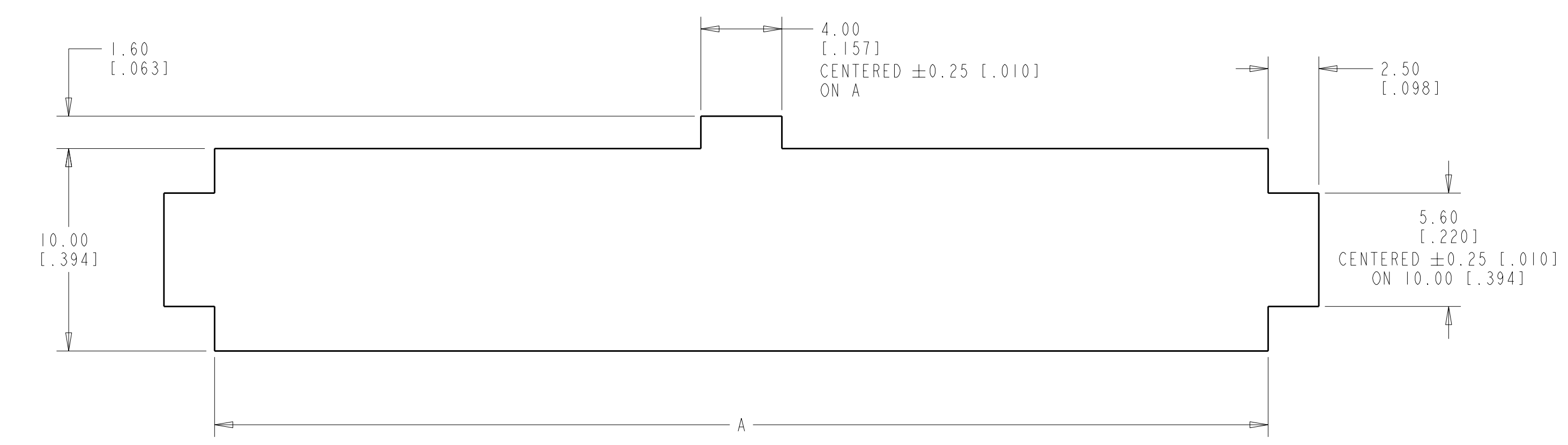
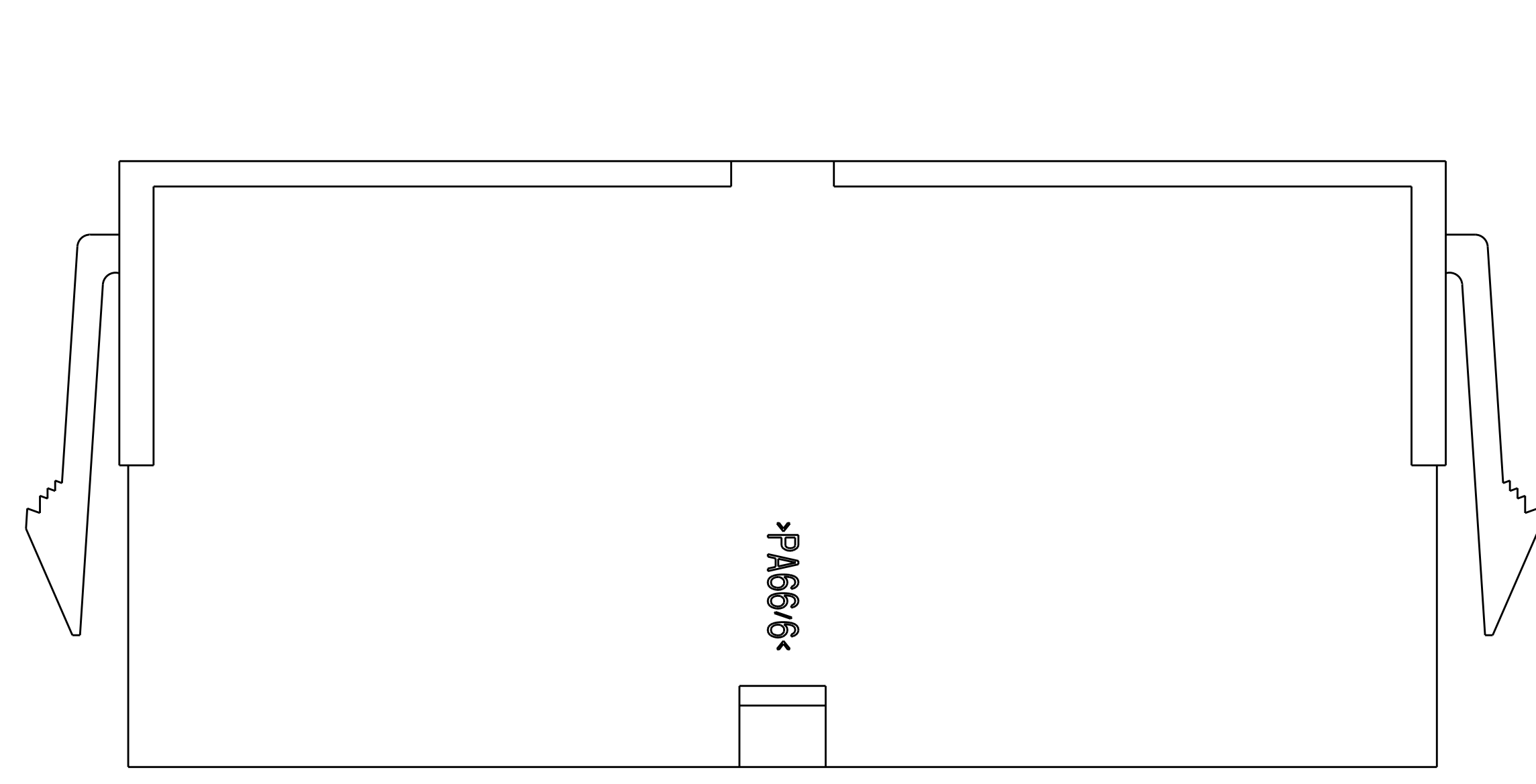
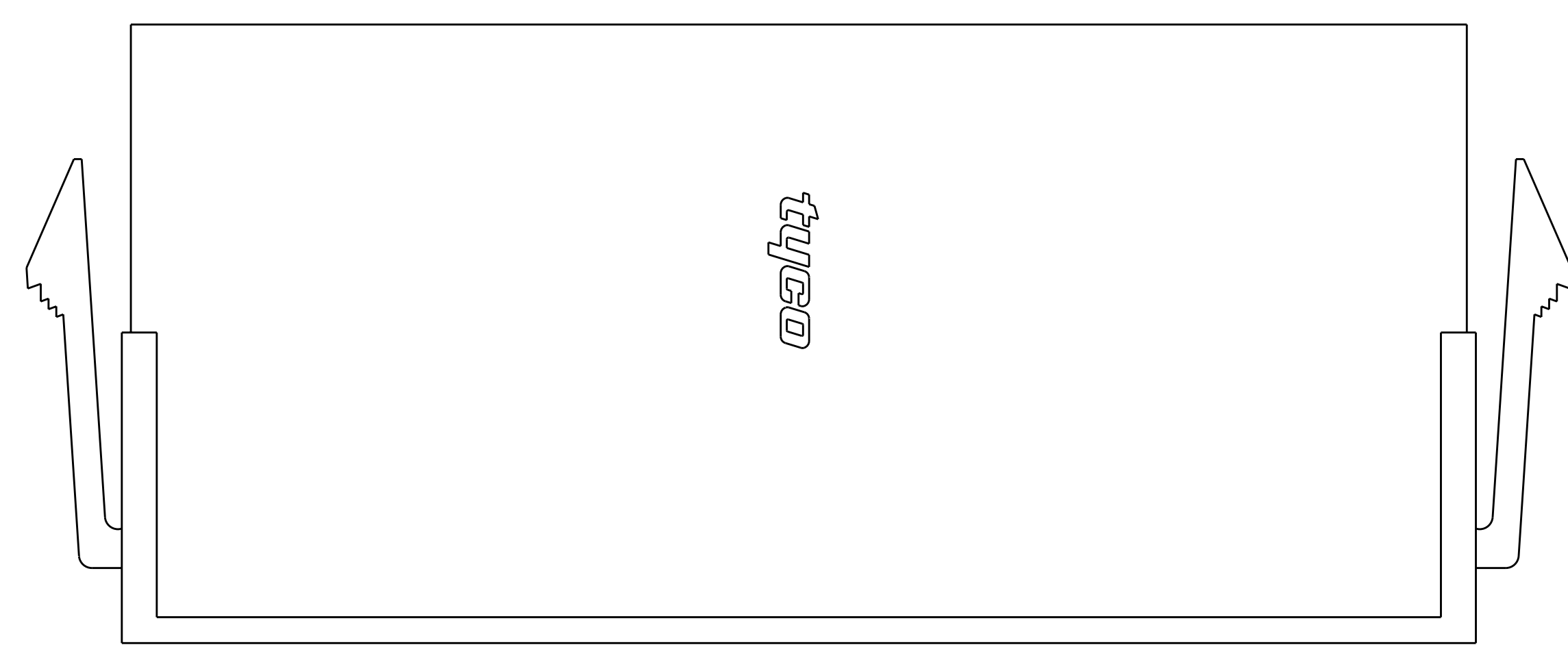
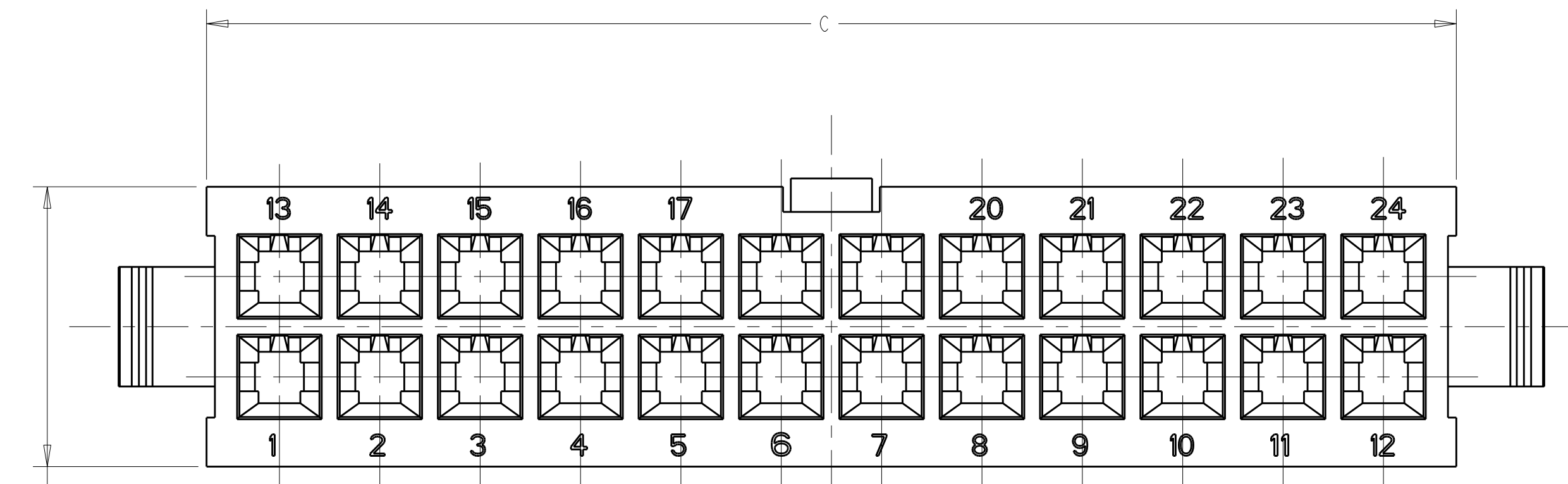
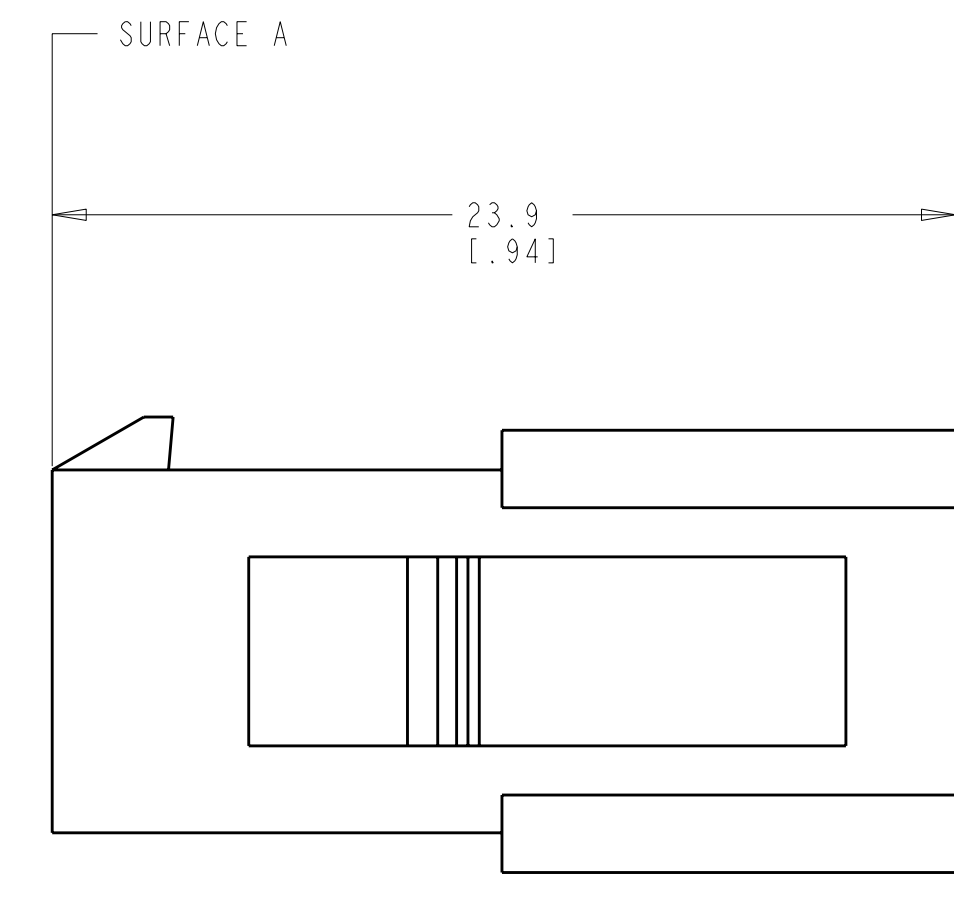
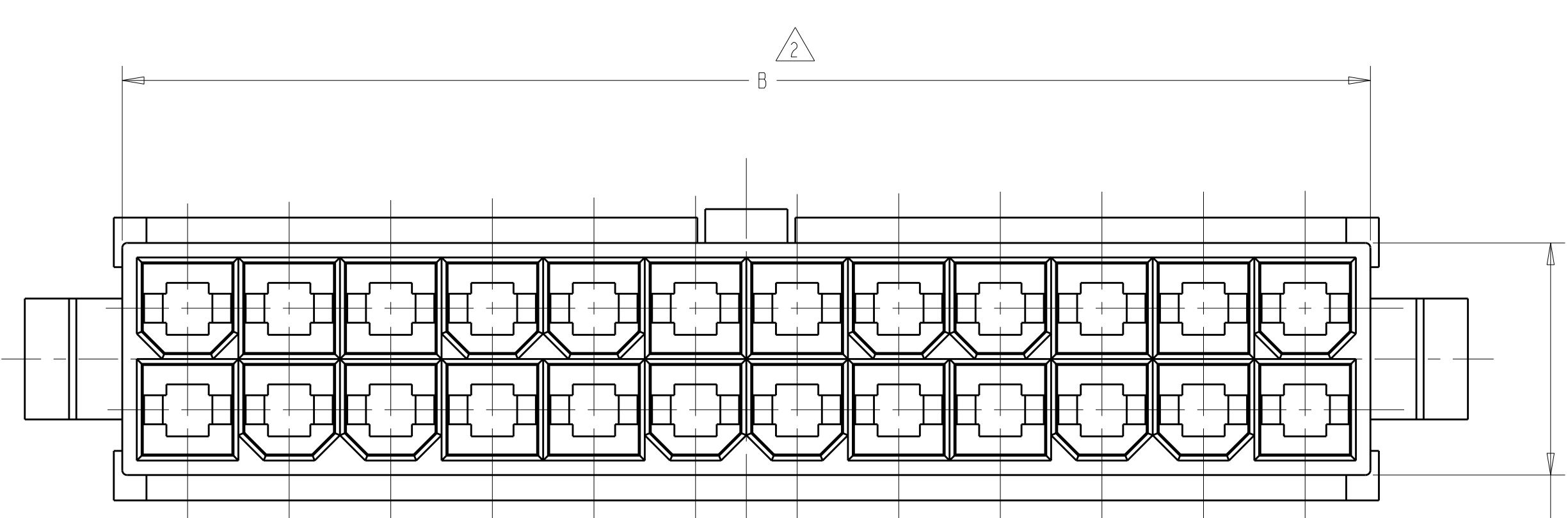


LOC	DIST	REV	DATE	BY	APPD
CM	00	C	11NOV2009	HMR	KR



RECOMMENDED CUT OUT  
 FOR 2.00 [.079] MAX. THICK PANEL



△ NYLON, UL94V-0, NATURAL (WHITE).

△ DIMENSION TO BE CHECKED AT SURFACE A.

3. DIMENSIONS IN BRACKETS ARE IN INCHES.

4. MALE CONTACTS MUST BE INSERTED SO THAT THE TOP OF THE WIRE AND INSULATION CRIMPS ARE FACING THE SIDE OF THE HOUSING WITH THE LOCKING LATCH.

5. RECOMMENDED MAX. PANEL THICKNESS 2.00 [.079].

6. PANEL MUST BE PUNCHED SO THAT THE HOUSING ENTERS THE PANEL IN THE SAME DIRECTION AS THE PUNCH.

C	B	A	NO. OF POSITIONS	PART NUMBER
52.3[2.059]	51.6[2.032]	52.00[2.047]	24	2-794598-4
48.1[1.894]	47.4[1.866]	47.80[1.882]	22	2-794598-2
43.9[1.728]	43.2[1.701]	43.60[1.717]	20	2-794598-0
39.7[1.563]	39[1.535]	39.40[1.551]	18	1-794598-8
35.5[1.398]	34.8[1.370]	35.20[1.386]	16	1-794598-6
31.3[1.232]	30.6[1.205]	31.00[1.220]	14	1-794598-4
27.1[1.067]	26.4[1.039]	26.80[1.055]	12	1-794598-2
22.9[.902]	22.2[.874]	22.60[.889]	10	1-794598-0
18.7[.736]	18[.709]	18.40[.724]	8	794598-8
14.5[.571]	13.8[.543]	14.20[.559]	6	794598-6
10.3[.406]	9.6[.378]	10.00[.394]	4	794598-4
6.1[.240]	5.4[.213]	5.80[.228]	2	794598-2

TYCO ELECTRONICS CORPORATION  
 THIS DRAWING IS UNPUBLISHED. RELEASED FOR PUBLICATION BY TYCO ELECTRONICS CORPORATION. ALL RIGHTS RESERVED. CONTACT TYCO ELECTRONICS CORPORATION FOR THE LATEST REVISIONS.

DIMENSIONS: mm [INCHES]	TOLERANCES UNLESS OTHERWISE SPECIFIED:	DWN S. HOOVER 11-OCT-2004	AMP Incorporated Harrisburg, PA 17105-3608
9 PLC ± .2	± .2 [ .011 ]	CHK D. COLEY 11-OCT-2004	Tyco Electronics
3 PLC ± .1	± .1 [ .005 ]	APPD D. COLEY 11-OCT-2004	
4 PLC ± .1	± .1 [ .005 ]	PRODUCT SPEC	PLUG, PANEL MOUNT, 2 TO 24 POSITION, AMP-DUACTM POWER CONNECTOR
ANGLES	± .1	APPLICATION SPEC	SIZE CAGE CODE DRAWING NO. RESTRICTED TO
FINISH	± .1	WEIGHT	A1 00779 C=794598
MATERIAL	△	CUSTOMER DRAWING	SCALE 4:1 SHEET 1 OF 1 REV C

